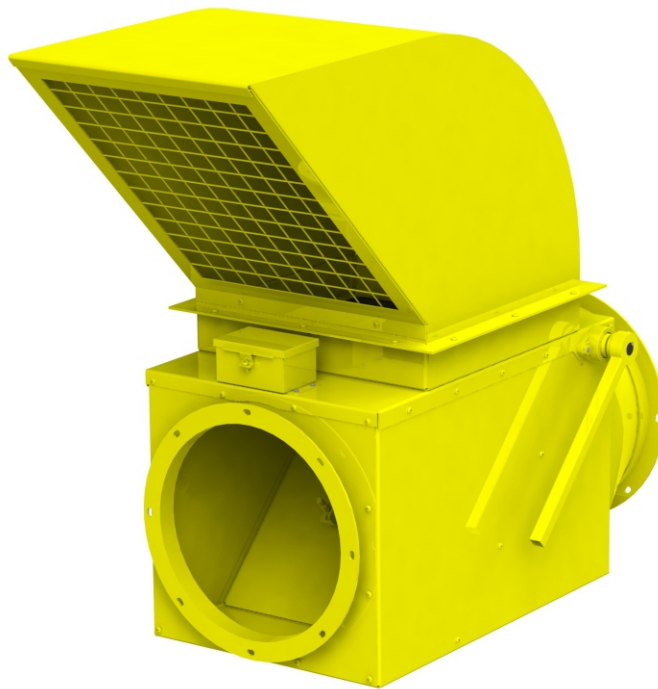


ABORT DAMPER

The Hansentek High Speed Abort Damper, or Abort Gate, is typically used prior to returning air from the dust collector back into the building. In the event of an explosion, the purpose of the Abort Damper is to redirect flames and pressure to the atmosphere, protecting personnel and the building.

The Abort Damper is controlled by an electrical signal generated by a spark detection system. The electrical signal releases the latching device, allowing the door to open to the atmosphere. The door is reset by a manual handle as per NFPA 664.



FEATURES

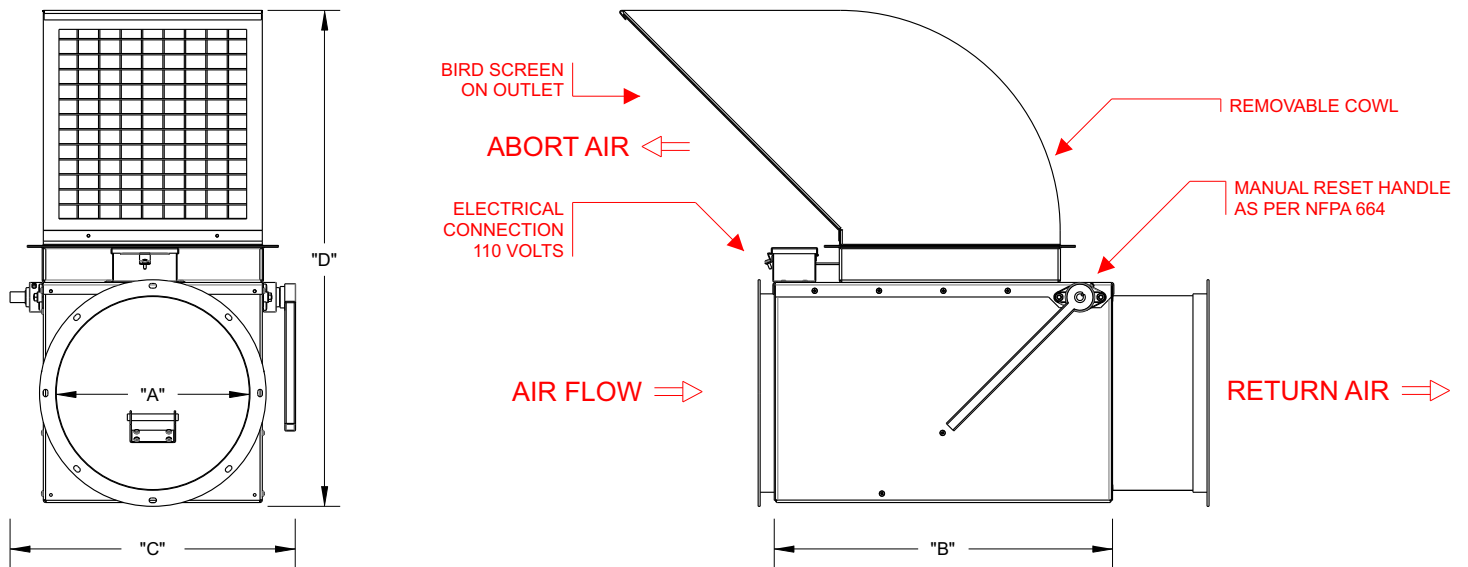
- 110 VAC power input
- Square or round inlet and outlet
- Reversible outlet cowl with bird screen
- Can be used on positive or negative pressure ducting
- Reaction time of less than 0.5 seconds
- Heavy duty reinforced construction
- Custom sizes available
- Magnet options available

WWW.**HANSENTEK**.COM



4141 Sladeview Crescent, Unit 18, Mississauga, Ontario, Canada L5L 5T1
Phone: 905-607-5780 Email: info@hansentek.com

ABORT DAMPER DRAWING



ABORT DAMPER DIMENSIONS AND DETAILS

A - Size (inches)	8	10	12	14	16	18	20
B - Overall Length (inches)*	22.7	22.7	25.7	25.7	31.8	31.8	34.3
C - Overall Width (inches)	20.6	20.6	24.6	24.6	28.6	28.6	30.6
D - Overall Height (inches)	30.1	30.1	38.0	38.0	45.9	45.9	50.0
Approx. Weight (lbs)*	130	130	200	200	290	290	360

A - Size (inches)	22	24	26	28	30	32	34	36
B - Overall Length (inches)*	40.7	40.7	50.7	50.7	60.5	60.5	60.5	60.5
C - Overall Width (inches)	34.4	34.4	39.7	39.7	43.9	43.9	47.9	47.9
D - Overall Height (inches)	57.9	57.9	68.3	68.3	76.2	76.2	87.0	87.0
Approx. Weight (lbs)*	470	470	580	580	700	700	900	900

A - Size (inches)	38	40	42	44	46	48
B - Overall Length (inches)*	64.5	64.5	70.7	70.7	76.8	76.8
C - Overall Width (inches)	51.9	51.9	55.9	55.9	60.0	60.0
D - Overall Height (inches)	95.5	95.5	103.7	103.7	109.8	109.8
Approx. Weight (lbs)*	1040	1040	1220	1220	1410	1410

* Note: Length and weight does not include transitions